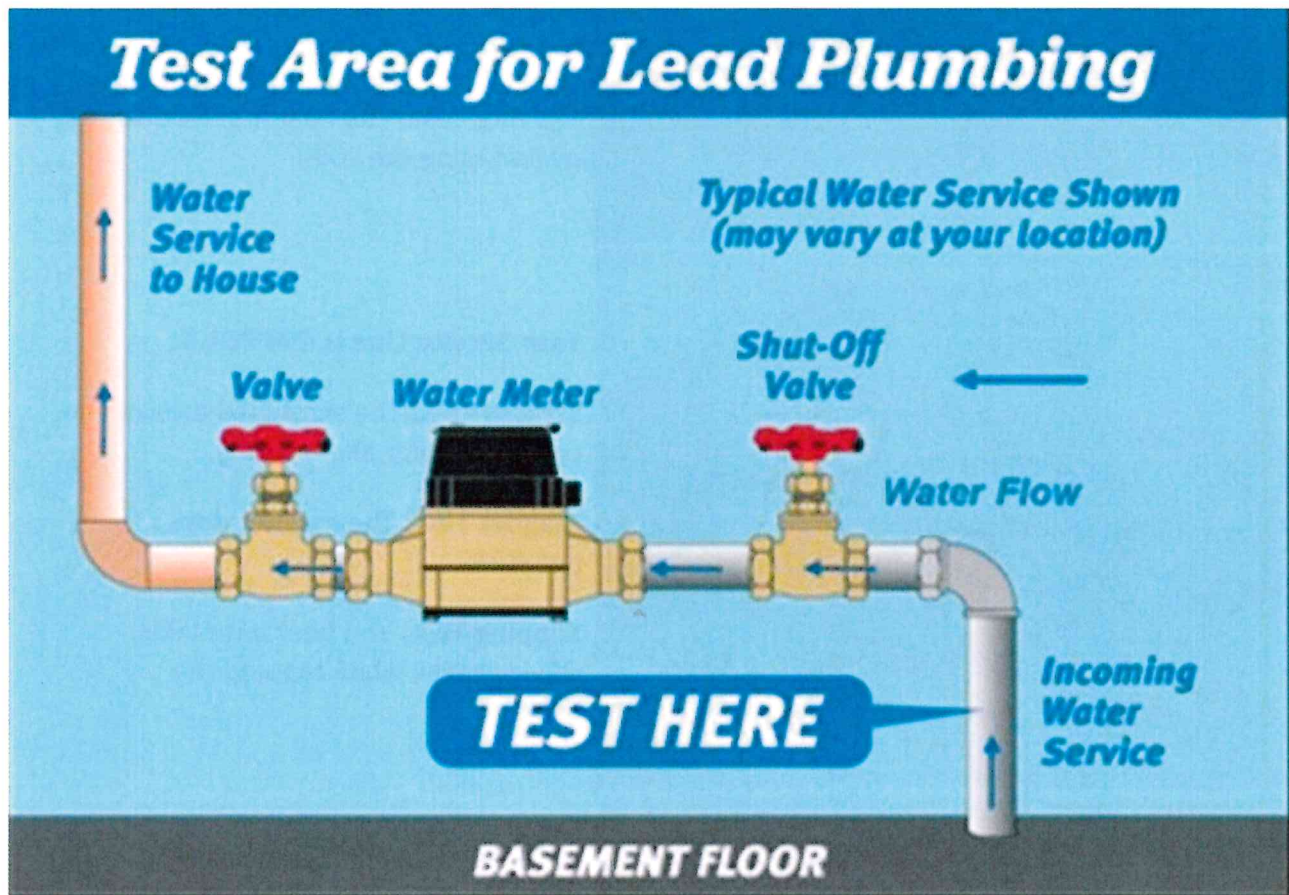


Please follow the instructions below to determine the material of your pipes.

Materials Needed for Testing: Strong Magnet, a Coin, and Flathead Screwdriver.

1. Find the water service line entering the home or building.

If you have a basement, the water service line will typically enter the building through the basement floor or the basement side wall. If you do not have a basement, the service line should enter the building through the floor on the main level. You will see a shut-off valve and water meter installed on this pipe. The testing location on the pipe will be between the entry point into the building and the shut-off valve, as show below.



2. Scratch Test

Scratch the outer surface of the pipe with a coin or flathead screwdriver. Be very careful not to puncture a hole in the pipe and do not use sharp objects for this test.

3. Magnet Test

Place a magnet on the pipe to check if it sticks to the pipe.

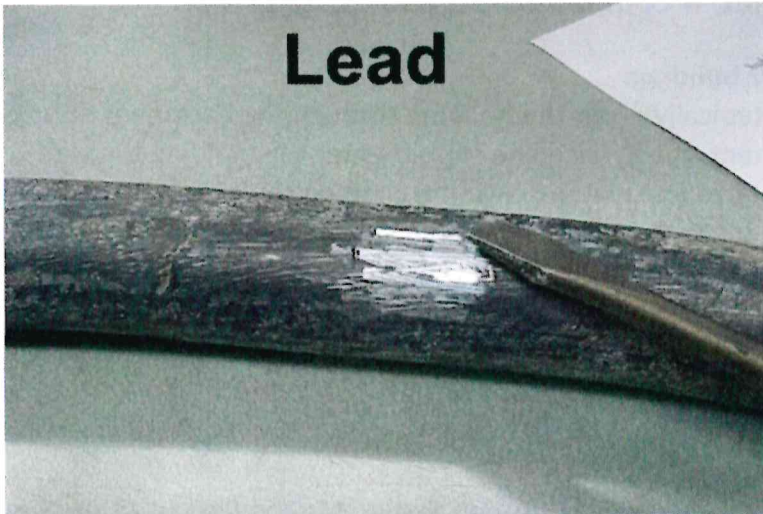
4. Tapping Test

Tap the pipe with a coin and listen to the sound it makes.

SCAN QR CODE FOR SURVEY



5. Compare the results of your test with the guidelines shown below:

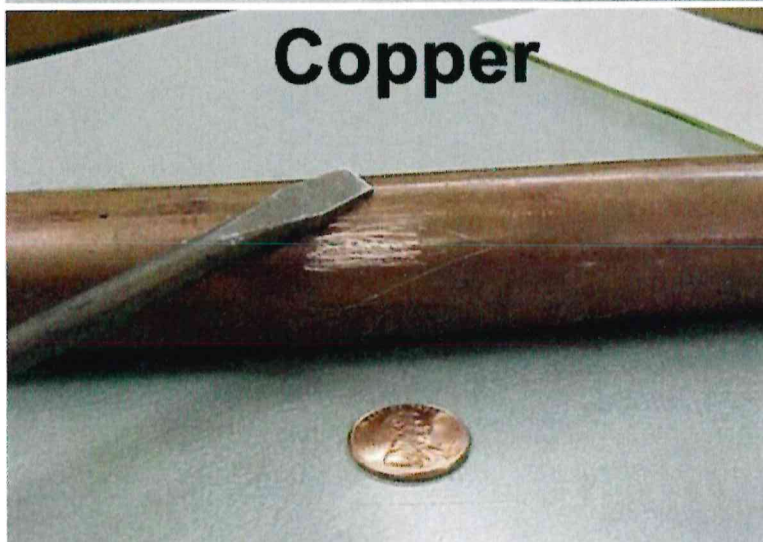


Your Service Line is LEAD if:

Scratch Test: The scratched area is shiny and silver.

Magnet Test: The magnet does not stick.

Tapping Test: You hear a dull noise while tapping the coin.



Your Service Line is COPPER if:

Scratch Test: The scratched area is copper in color like a penny,

Magnet Test: The magnet does not stick.

Tapping Test: You hear a metallic ringing noise while tapping the coin.



Your Service Line is GALVANIZED STEEL if:

Scratch Test: The scratched area remains a dull gray.

Magnet Test: The magnet sticks.

Tapping Test: You hear a metallic ringing noise while tapping the coin.

6. If you have identified that your incoming water service line is Lead please contact the City of Zion Water Department at (847) 746-4050 to schedule an inspection.