

Dowie
Commons

ZION,
ILLINOIS

Exceptional Retail Space For Lease!

**21st and Sheridan Road
S.E.C. Sheridan Road and 21st Street
(Illinois Route 173)**

LOCATION

Signalized intersection at the southeast corner, Sheridan Road and 21st street (Illinois Route 173), Zion, Illinois. IDOT traffic counts to show AADT of over 30,000 vehicles.

BUILDING SIZE

7,425 Square feet; units available from 1,005 square feet.

AREA DEMOGRAPHICS and SPECIAL FEATURES

The city of Zion, Illinois has a population of over 22,000 people. Over 300,000 people live within 5 miles of the intersection, average annual household income in excess of \$60,000. Daytime employment population within one mile in excess of 10,000. For additional community information visit http://www.cityofzion.com/departments/economic_development/fast_facts.html.

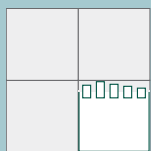
CO-TENANCY and NEIGHBORS

Tenants includes Dunkin' Donuts/Baskin Robbins, Americash Loans, Verizon Wireless, Jimmy John's Gourmet Sandwiches, and Great Lakes Credit Union. Neighbors include recognized category leaders including Walgreens, Jewel Foods, Advance Auto, Dollar General, McDonald's, and Applebee's.



For further
information,
please contact
James Kaplan at

1939 Waukegan Road
Suite 106
Glenview, Illinois 60025
Tel. 847.486-8100
Fax 847.486-8188
www.jkaplanco.com



JAMES KAPLAN
COMPANIES, LLC

Site Information

Dowie Commons
Zion, Illinois

Exceptional Retail Space For Lease

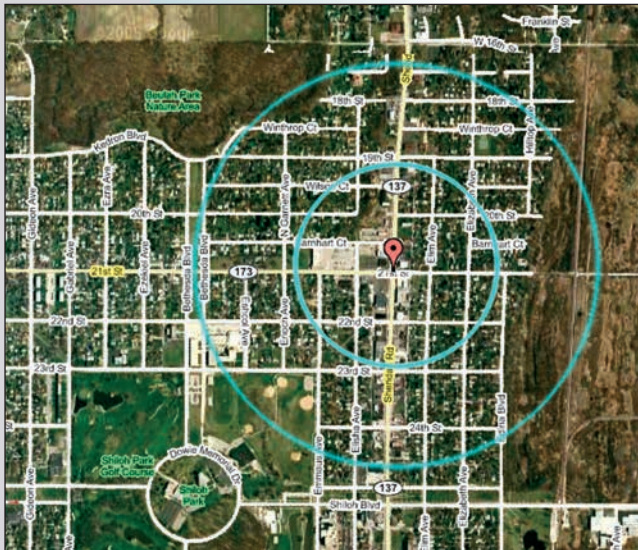
Property Statistics

- Spaces From 1,005 Square Feet
- Zoned B-3
- Newer Construction

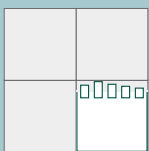
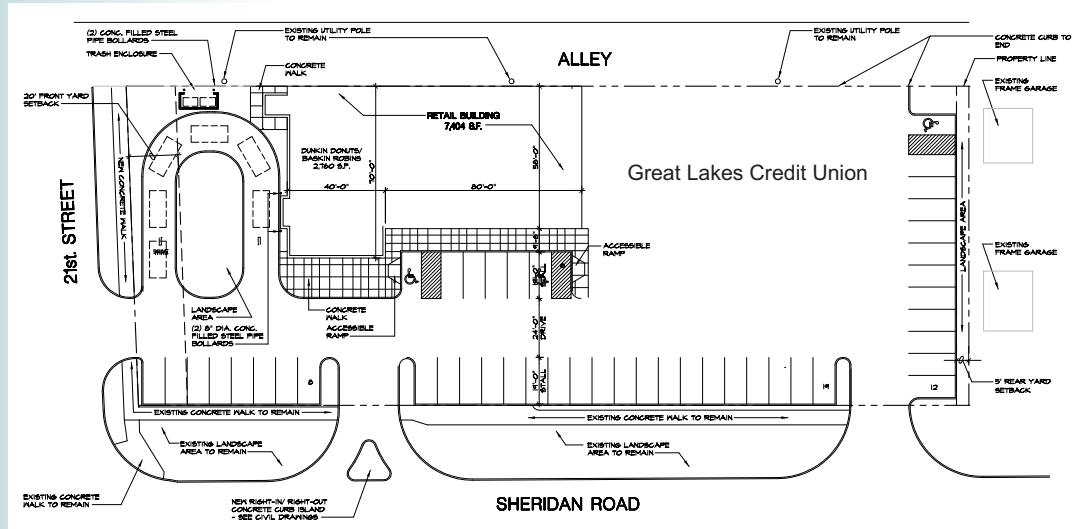
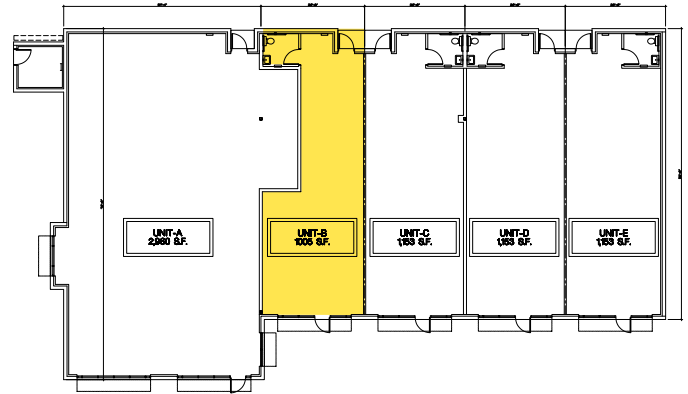
Comments

Great corner location across from Walgreens, Advance Auto, Dollar General, Jewel Osco, and Applebee's.

Class A building with good window lines. Great co-tenancy.



© 2005 Google / Imagery © 2005 DigitalGlobe



JAMES KAPLAN
COMPANIES, LLC

Information is compiled from sources deemed reliable, however, no representation as to accuracy is implied or warranted.