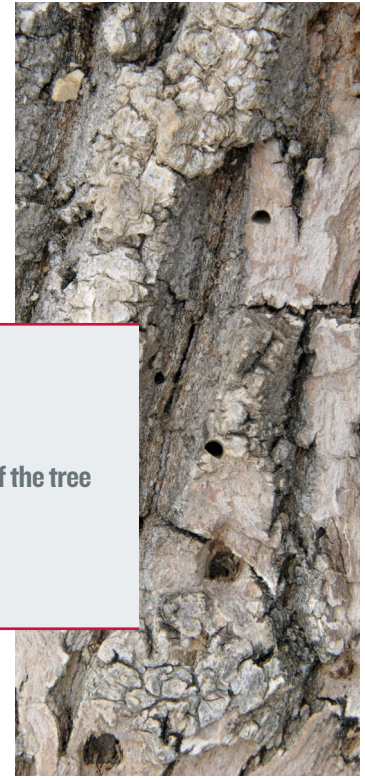


EMERALD ASH BORER: TREE & VEGETATION MAINTENANCE

ComEd proactively works to care for trees throughout northern Illinois. This includes trees that have been impacted by the very aggressive Emerald Ash Borer beetle (EAB) that has become prominent in the area.

EAB beetles are invasive pests that infest ash trees by laying eggs under the bark of the tree. The larvae of the Emerald Ash Borer are expected to kill most native ash trees in the Midwest. Trees that are infested may look healthy, but they are at risk.



D-Shaped Holes in Bark

Are your ash trees affected?

HERE'S WHAT TO LOOK FOR:

- A thinning tree canopy, caused by the inability of nutrients and water to reach the top of the tree
- New young branches sprouting from the tree's trunk
- D-shaped holes in the bark or branches, caused by the beetle emerging from the tree

Trees and other vegetation cause about 13 percent of all power outages. Preventative tree maintenance helps to ensure the reliability of your electric service. Infested ash trees around your property require trimming and in cases where the EAB has so significantly damaged a tree it may need to be removed. If left untreated, trees can become a hazard by dropping limbs or even falling over.



An EAB-infested tree interfering with power lines

How ComEd's EAB Program Works

- ComEd inspects trees for EAB and determines what type of work is necessary to help avoid power outages.
- All trees that are infested are tagged with orange tape.
- Customers receive notifications throughout the EAB-work cycle explaining what type of work to expect, and when.
- ComEd tree maintenance is provided free to our customers. All work is performed by trained, qualified arborists.

MORE 

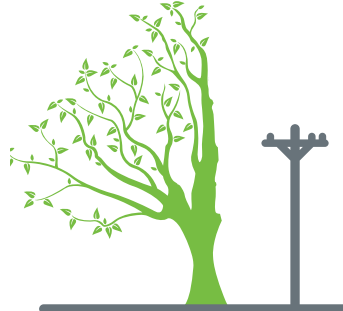
EMERALD ASH BORER: TREE & VEGETATION MAINTENANCE

Line Clearance Methods

If an EAB-infested tree or branch has the potential to interfere with power lines, trimming or tree removal is required. The final shape of your tree(s) will depend on its size, shape and proximity to power lines.



Possible Interference



Side Trimming

TREE PLANTING:

If you are thinking about planting a new tree, please reference our tree planting guidelines at

ComEd.com/SmartPlanting

for help with the right tree.

Customer Notifications

Work to Identify Infested Trees

Customers receive a doorhanger that informs them that trees in their area are being inspected for EAB and what kind of work they can expect within the next 3 months. Doorhangers include a brochure from the Morton Arboretum with full details about the EAB beetle. A tree removal waiver is included if tree removal is necessary on their property.



Work Beginning in the Next 2 Weeks

Customers receive a doorhanger informing them that EAB work will begin in their area within the next two weeks. This courtesy notification lets them know what to expect. No response is required.

Work is Complete

Customers receive a final doorhanger informing them that EAB work is complete. This courtesy notification reminds customers about safety, trees and how they can affect the reliability of electric service in their area.

